

WCKER quick start guide

This document is a short guide to running and using the TALL Wizard Construction Kit Extension for Reload.

Setup

WCKER does not have an installation program; instead it is provided in a zip archive which you must extract to a convenient location (such as your Desktop) by right-clicking and selecting Extract All. *Note that you must **unzip** the archive – not just browse inside it.* Download the current binary version from:

<http://wcker.conted.ox.ac.uk/cgi-bin/trac.cgi/wiki/WckerDownload>.

Usage

To start WCKER double-click the “wcker.bat” file (on Linux, use “wcker.sh”). This will cause the standard Reload Editor to run (and can be used as normal if required).

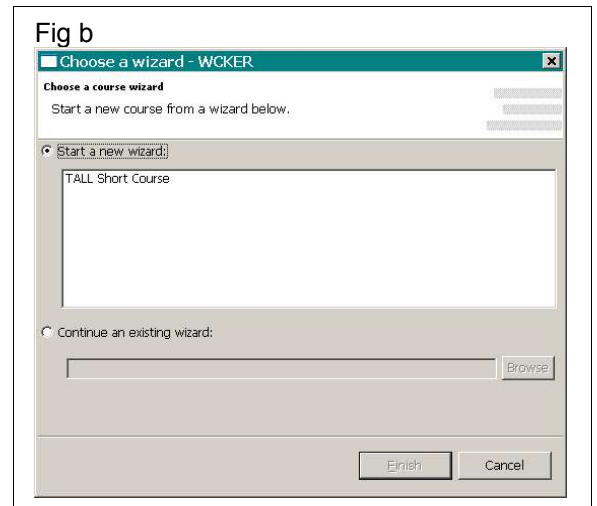
To start using the WCKER tool, click on the Tools menu and choose the WCKER menu option as in Fig a.



The wizard choice dialogue (Fig b) will appear, allowing you to either:

- select from one or more wizard types to start a new wizard, or
- continue working with a wizard and course that you have worked on previously and saved, by selecting the its directory.

If you are not sure which wizard is appropriate for you, speak to your support team. To begin, select a new wizard from the list and click Finish.

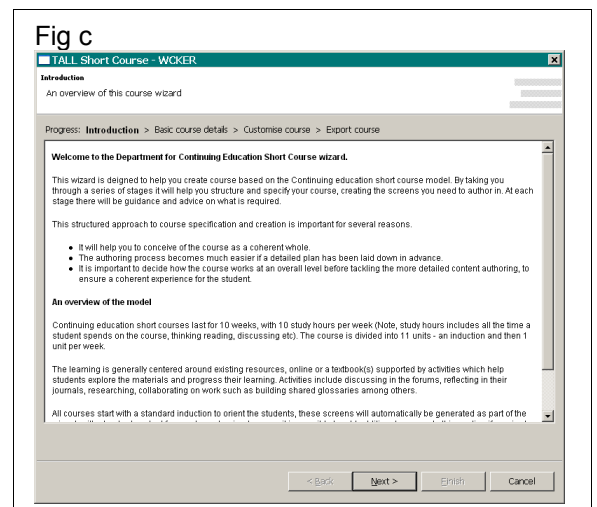


After a moment, the wizard will appear with the first step (Fig c), which contains introductory information. This will give an overview of the wizard and the type of course it is designed to produce.

Each wizard step has the same makeup, from top to bottom:

1. A title and description (black text on white).
2. A progress line (black text on grey), showing each step in the wizard.
3. The activity area (the main block of text shown here), where information is displayed and you can fill in your course details.
4. Wizard control buttons (at the bottom right), allowing you to move forwards and back through the steps, as well as finishing or cancelling the current session. Clicking

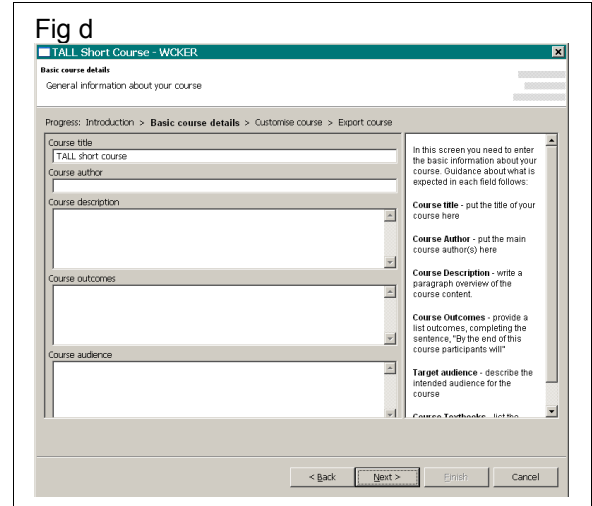
Cancel will give the option of saving your progress in that session, which will keep them in a “wcker\working\



By working through each of the steps using the **Next** button you can fill in details specific to the course you want to make.

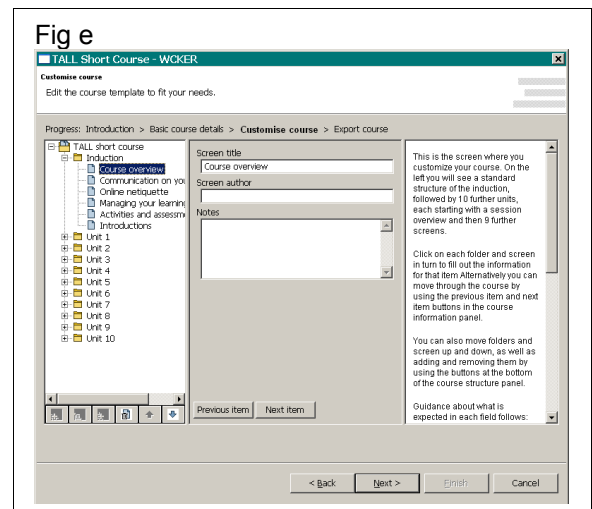
For example, in (Fig d) the activity area of this step contains several input fields (on the left) for the course being created. On the right side is a help panel giving details about the type of information that should be added.

Note that you can move between input fields using the **Ctrl+Tab** keys together.



Courses often feature a hierarchical structure of modules, units and pages (although perhaps with different nomenclature). This structure is accommodated with a tree structure step (Fig e), where any of the hierarchy items can be selected and the relevant details added. Click on the tree itself or the **Previous item** and **Next item** buttons to change which part of the tree is selected.

Below the tree are buttons which you can use to add, move, and remove items on the tree.



The final step is to export the files and directories that the course wizard represents. To do this, browse a directory within which the course should be saved, then click **Export** or **Finish**.

The export will produce:

- Directories reflecting the course's hierarchical structure.
- Template HTML pages for each of the pages defined in the course hierarchy. These may incorporate specific information entered into WCKER.
- A summary page (summary.html), which gives overview for the course structure and each page, and links to each the pages.
- An IMS Content Packaging (IMSCP) manifest which can be used to import the course into some Virtual Learning Environments (VLEs). Zipping the contents of the export directory will produce an IMSCP file suitable for transporting between VLEs.

