

WCKER usage guide

This document is a short guide to running and using the TALL Wizard Construction Kit Extension for Reload. WCKER provides “course wizards”, that is small guided dialogues spanning several steps, to aid the construction of well structured course materials.

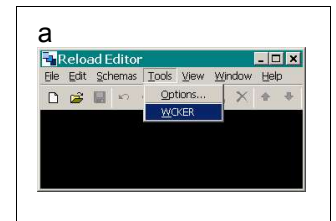
Setup

WCKER is provided in a zip archive which you should unzip to a convenient location, e.g. on your Desktop. WCKER does not need to be installed, but can be run directly from the unzipped archive. Download the current binary version from <http://wcker.conted.ox.ac.uk/cgi-bin/trac.cgi/wiki/WckerDownload>.

Usage

Double-click the starter script “wcker.bat” (on Linux, use “wcker.sh”). The standard Reload Editor will run, and can be used as normal.

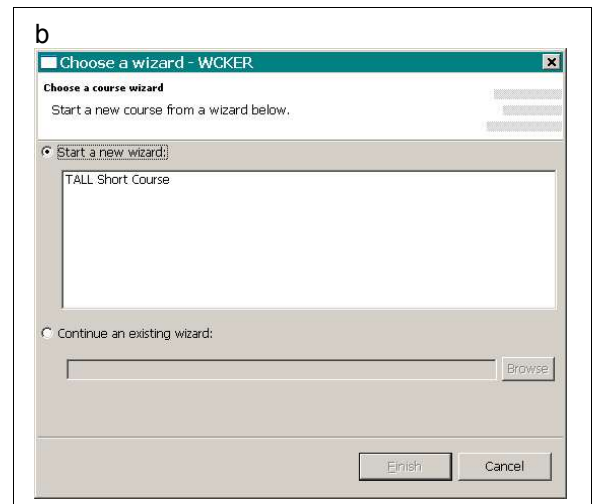
Start the WCKER extension within Reload, using the **Tools > WCKER** menu option (a).



The wizard choice dialogue (b) will appear, allowing you to either:

- Select from one or more wizard types to start a new wizard, or
- continue working with a wizard and course that you have worked on previously and saved, by selecting the its directory.

To begin, select a new wizard from the list and click **Finish**.

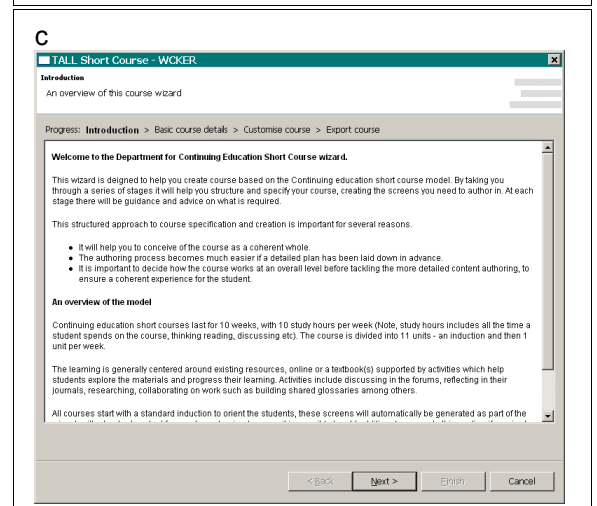


After a moment, the wizard will appear with the first step (c), which contains introductory information. This will give an overview of the wizard and the type of course it is designed to produce.

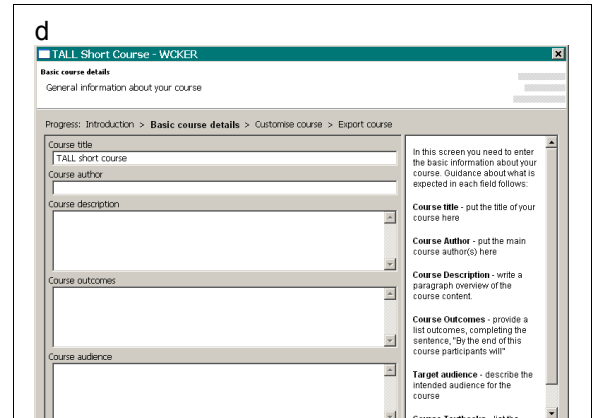
Each wizard step has the same makeup, from top to bottom:

1. A title and description (black text on white).
2. A progress line (black text on grey), showing each step in the wizard.
3. The activity area (the main block of text shown here), where information is displayed and you can fill in your course details.
4. Wizard control buttons (at the bottom right), allowing you to move forwards and back through the steps, as well as finishing or cancelling the current session. Clicking **Cancel** will give the option of saving your progress in that session, which will keep them in a “wcker\working\

By working through each of the steps using the **Next** button you can fill in details specific to the course you want to make.

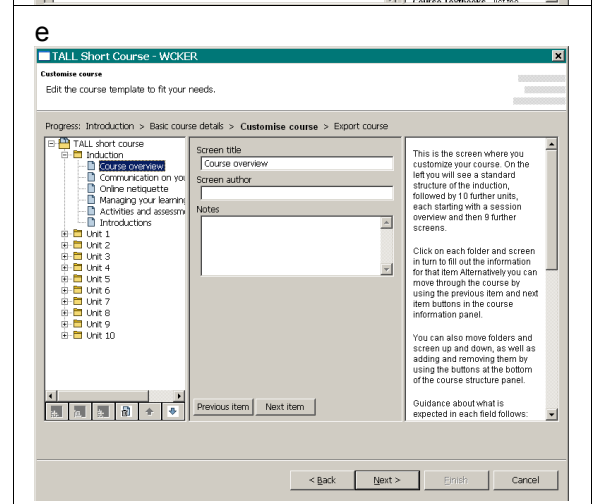


For example, in (d) the activity area of this step contains several input fields (on the left) for the course being created. On the right side is a help panel giving details about the type of information that should be added.



Courses often feature a hierarchical structure of modules, units and pages (although perhaps with different nomenclature). This structure is accommodated with a tree structure step (e), where any of the hierarchy items can be selected and the relevant details added. Click on the tree itself or the Previous item and Next item buttons to change which part of the tree is selected.

Below the tree are buttons which you can use to add, move, and remove items on the tree.



The final step is to export the files and directories that the course wizard represents. To do this, browse a directory within which the course should be saved, then click Export or Finish.

